

# **ABRACLAD**

## **CHROMIUM CARBIDE OVERLAY PLATES**

Representing one of the most versatile wear resistant materials currently available to the plant engineer, **ABRACLAD** offers excellent resistance to abrasive wear under moderate to high impact conditions.



### **A wide choice of plate sizes and thicknesses**

**ABRACLAD** is available in a choice of plate sizes up to a maximum of **3,000 mm X 1,500 mm** and a choice of thicknesses from **6 mm to 29 mm**

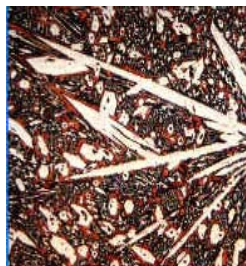
Virtually any alloy/base plate combination can be supplied. Typical overlay thicknesses range from 3 mm to 17 mm and base plate thicknesses from 3 mm to 20 mm.

### **Nominal overlay composition**

**ABRACLAD** has a high chrome alloy overlay with a nominal 34% Cr composition and small additions of manganese and other elements.

### **Microstructure Hardness: 60-63 HRc**

The wear performance of chromium carbide overlay plate is not solely a function of hardness but relies on a microstructure densely packed with primary chromium carbides. Abraclad's microstructure has been refined to offer the ideal combination of abrasion and impact resistance.



## **ABRACLAD** overlay plate

Available as full sheets up to  
3,000 x 1,500 mm

### **Full profiling service for flat liners**

Competitive plasma profiling  
including fixing holes.

### **Comprehensive fabrication service**

ABRACLAD can also be  
supplied as fabricated  
structures such as chutes,  
hoppers, cones, screens,  
pipework, etc.

### **Competitively priced**

ABRACLAD offers excellent  
value for money and  
thickness for thickness is  
one of the most cost  
effective overlay plates  
available today.

### **Wear performance guaranteed!**

In known applications  
ABREMA will provide  
performance guarantees for  
its Abraclad wear protection.

### **Typical applications**

Chutes & chute liners

Hopper & bunker liners

Classifier cones

Screen and crash decks

Pipe work internally or  
externally clad

Bucket protection

Pan mixer bottoms & sides

# ABRADUR

## RQT STEEL PLATES & PROFILES

In applications requiring double-sided wear protection **ABRADUR** - RQT through-hardened plate is the ideal solution. It also offers high impact resistance for applications such as skip bottoms and its smooth, crack-free surface is ideal where sticky materials are involved.



**ABRADUR** hot rolled profiles such as cutting edges, flat bars and grouser bars are widely used on a variety of earth moving equipment models and related bulk handling machinery.

### Three quality grades

Available in 400, 450 and 550 Brinell grades, **ABRADUR** is generally supplied in full sheets, flat profiles, flat bars, cutting edges and grouser bars. It can be readily cut using conventional oxy-gas processes and plasma-arc and fabricated using low hydrogen welding rods. Limited forming is also possible.

### Plate sizes and thickness

**ABRADUR** grades are available in all common plate sizes up to a maximum 6 m x 2 m and in a choice of thickness from 3 mm to 60 mm. Other profile sizes as stated in technical brochures.

GRADE	HARDNESS
ABRADUR 40	340 - 440 BRINELL
ABRADUR 45	430 - 510 BRINELL
ABRADUR 50	450 - 560 BRINELL

### ABRADUR RQT Steel Plates cutting edges and hot-rolled flat bars

- ◆  
Double sided wear protection
- ◆  
High impact resistance
- ◆  
Smooth surface for sticky materials
- ◆  
Used in combination with Abraclad overlay plate for cost effective solutions to chute and hopper wear.
- ◆  
Cutting Edges, Flat Bars and Grouser Bars
- ◆  
Direct application of hardfacing is possible using either wires or electrodes.

**FOR MORE TECHNICAL INFORMATION PLEASE ASK FOR SPECIALISED BROCHURES**

## SPECIALIST MATERIALS FOR INDUSTRY

As industrial operations become increasingly sophisticated and output is concentrated into fewer, more advanced plants, companies across the world are identifying new problems associated with intensive production techniques which cannot be resolved using traditional engineering materials and process chemicals.

Abraresist was formed to fill a gap in the market for an independent engineering consultancy which could identify and source cost effective solutions to this new breed of production problem.

### Problem solving through partnership

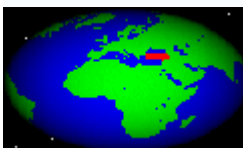
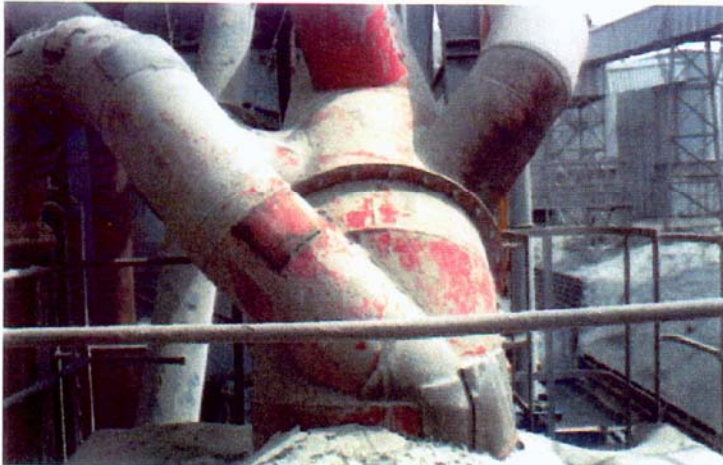
As its name suggests, the Company was originally established to provide high performance abrasion resistant materials for minerals extraction and processing, materials handling, power generation and similar heavy engineering industries. However, the close and successful working relationship which it has built with its customer has led to an expansion in the range of materials and services it offers.

### World-wide solutions to your local problem

The Company's principals are experienced engineers with an extensive international track record in engineering consultancy and procurement and use their knowledge and world-wide contacts to identify and supply the best solutions to meet engineering, environmental and budgetary constraints.

Abraresist can supply its specialist materials either direct or via approved regional stockists.

**Whatever the problem, whatever the industry, Abraresist can provide the answer.**



Santa Sanayi Mamulleri Tic. ve San. Ltd. Sti.  
Ankara Turkey  
Phone : 90-312-342 5250 – Fax : 90-312-342 5282  
[www.santa.com.tr](http://www.santa.com.tr)

### Abrasion resistant materials

Engineering steels  
Through-hardened plate  
Chromium carbide clad plate  
Manganese steel castings & engineering parts  
Ceramic castings & linings  
Polyurethane & rubber liners & screens  
Abrasion resistant epoxy compounds

### Repair / maintenance welding products

Tubular hardfacing electrodes, metal & flux cored wires  
Dissimilar metals joining, rebuilding wires & rods

### Materials handling and accessories

Conveyor belt scrapers & spares  
Metal detection systems  
Dust-free chutes

### Special powders and chemicals

Ferro-alloy powders  
Fines separation  
Slurry treatment  
Tip recovery  
Coal washery