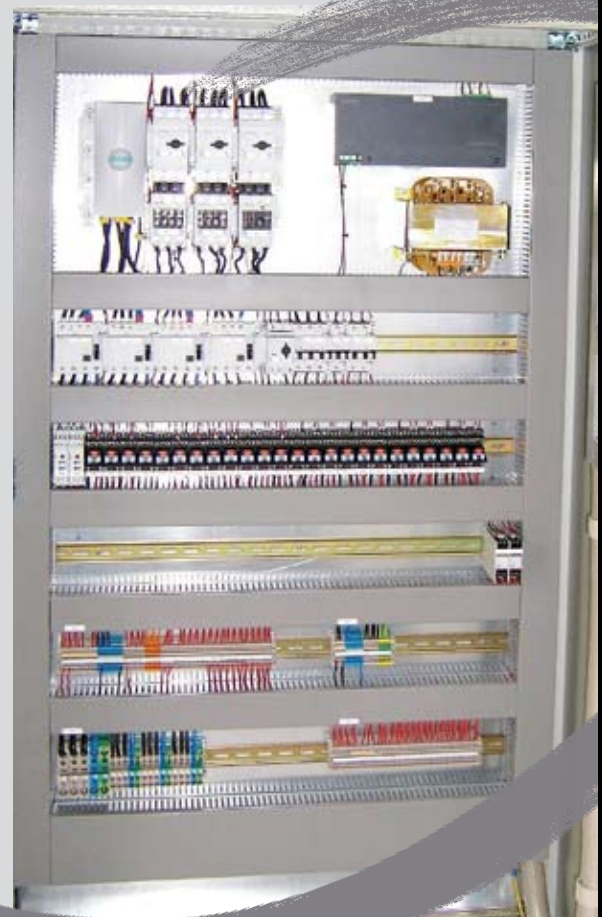




robecco generates!

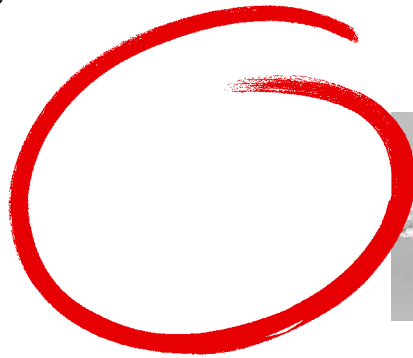
Control Systems and Switching Cabinet Construction



robecco

robecco

robecco, originally a classic electrical engineering company, has developed into a globally present service-oriented specialist for modern, forward-looking control systems and switching cabinet construction in the area of mechanical and plant engineering. Today, our range of services includes planning and advising, conceptual design and development as well as assembly and commissioning on the customer's premises.



A qualified team develops a special, cost-effective concept according to individual requirements.

Your Advantage...

CROSS-SECTORAL KNOW-HOW
FLEXIBILITY
INNOVATION
QUALITY and QUALITY MANAGEMENT
ONE-STOP FULFILMENT
COST-EFFECTIVE
SERVICE and MAINTENANCE



Control of a water treatment plant with caustic soda at Thyssen-Krupp in Andernach, Germany.

RANGE OF SERVICES

robocco makes complex, high-precision and technologically innovative controls with respective programming.

- **Project Management**
- **Engineering, Planning and Conceptual Design**
- **Drawing Up of Specification Sheets**
- **Control Concepts and Programming**
- **Development, Construction and Installation of Electrical Components**
- **Assembly and Commissioning on the Customer's Premises**
- **Switching Cabinet Construction**
- **Maintenance**
- **Spare Parts Delivery**
- **Technical Appraisals**
- **Energy Saving Concepts**
- **Gas Analysis Systems**
- **Silo Control**

related to the electrical fittings of your plants and machines

MACHINE CONTROL, POWER SUPPLY, AUTOMATION SYSTEMS,
DRIVE, MEASUREMENT AND CONTROL TECHNOLOGY



Main distribution frame in an old people's home



Inert gas unit with integrated CO measurement



Control of an inertisation plant for a coal-grinding plant in Peru



**robecco
generates**

QUALITY!



robecco GmbH
Industriepark 17
56593 Horhausen
Germany
Phone +49 2687 730
Fax +49 2687 929701
Email: info@robecco.de
www.robecco.de